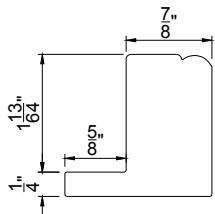
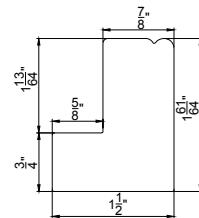


Framing Material

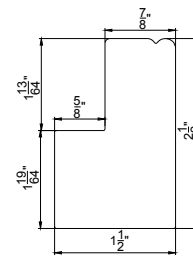
Beaded L Frame
w/ ¼" Thick Light Block



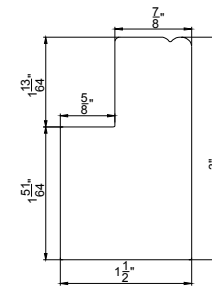
Beaded L Frame



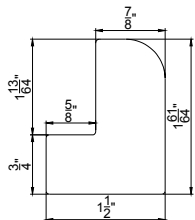
Beaded L Frame
w/ ½" Buildout*



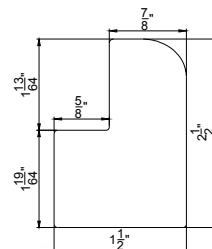
Beaded L Frame
w/ 1" Buildout*



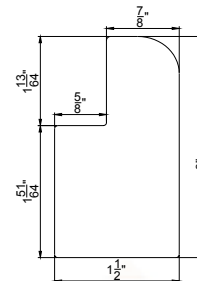
Bullnose L Frame



Bullnose L Frame
w/ ½" Buildout*



Bullnose L Frame
w/ 1" Buildout*



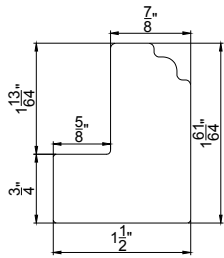
Also available

◇ Custom extension* up to 2" for L frames .

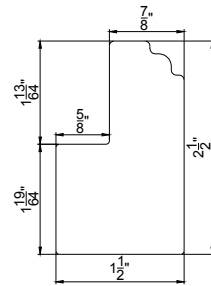
* Surcharge applies. Please see Options and Surcharge page for details

Framing Material

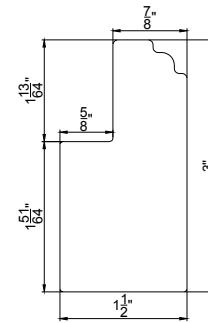
Colonial L Frame



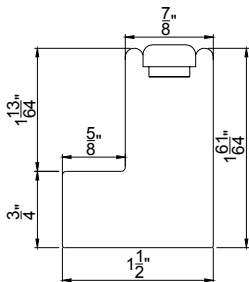
Colonial L Frame
w/ 1/2" Buildout*



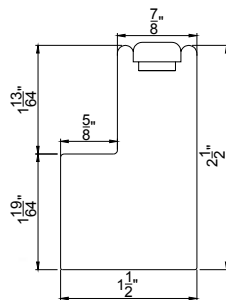
Colonial L Frame
w/ 1" Buildout*



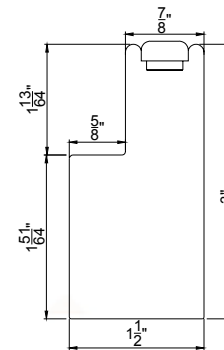
Vintage L Frame



Vintage L Frame
w/ 1/2" Buildout*



Vintage L Frame
w/ 1" Buildout*



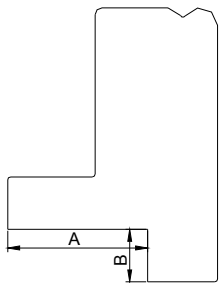
Also available

◇ Custom extension* up to 2" for L frames .

* Surcharge applies. Please see Options and Surcharge page for details

Framing Material

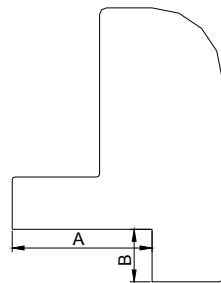
Notch Out
Beaded L Frame (A) ♦



$$A \leq 1''$$

$$B \leq \frac{3}{8}''$$

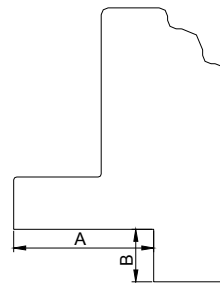
Notch Out
Bullnose L Frame (A) ♦



$$A \leq 1''$$

$$B \leq \frac{3}{8}''$$

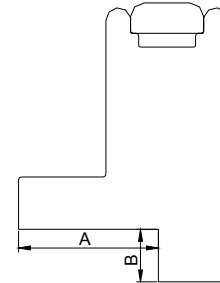
Notch Out
Colonial L Frame (A) ♦



$$A \leq 1''$$

$$B \leq \frac{3}{8}''$$

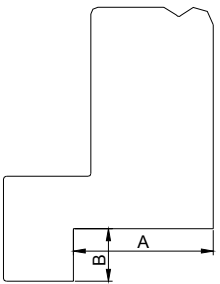
Notch Out
Vintage L Frame (A) ♦



$$A \leq 1''$$

$$B \leq \frac{3}{8}''$$

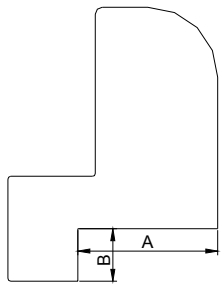
Notch Out
Beaded L Frame (B) ♦



$$A \leq 1''$$

$$B \leq \frac{3}{8}''$$

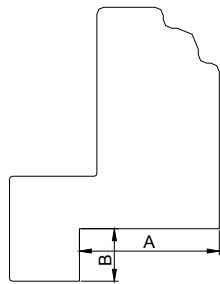
Notch Out
Bullnose L Frame (B) ♦



$$A \leq 1''$$

$$B \leq \frac{3}{8}''$$

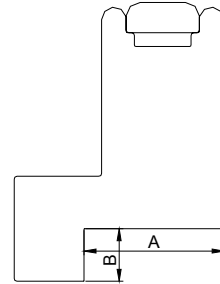
Notch Out
Colonial L Frame (B) ♦



$$A \leq 1''$$

$$B \leq \frac{3}{8}''$$

Notch Out
Vintage L Frame (B) ♦



$$A \leq 1''$$

$$B \leq \frac{3}{8}''$$

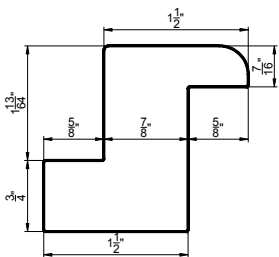
Also available

♦ Custom extension* up to 2" for L frames .

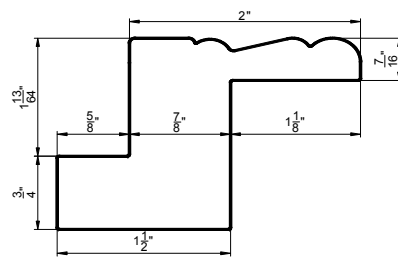
* Surcharge applies. Please see Options and Surcharge page for details

Framing Material

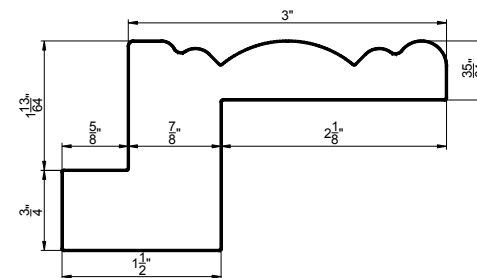
1½" Bullnose Z Frame



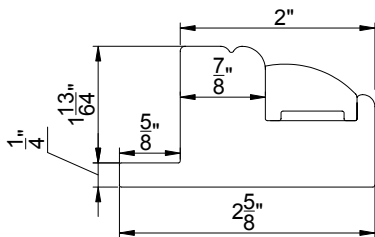
2" Bel Air Z Frame



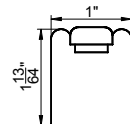
3" Crown Z Frame



2" Camber Deco Frame



1" Vintage Hang Strip



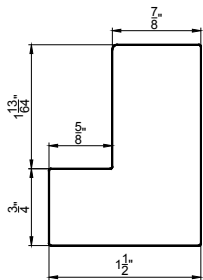
Also available

- ◇ ½", 1" and 1½" standard extension* and custom extension* up to 2" for Deco Frame
- ◇ Custom extension* up to 1" for Z frames
- ◇ Custom extension* up to 2" for Hang Strip (OM)

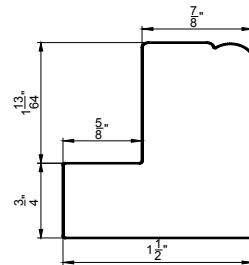
* Surcharge applies. Please see Options and Surcharge page for details

Framing Material

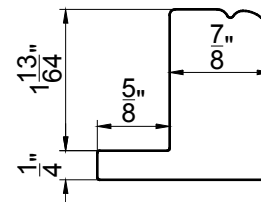
1½" Bullnose Z Sill Plate



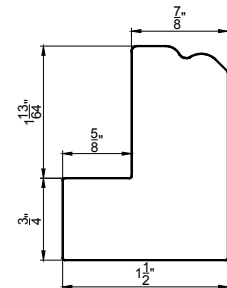
2" Bel Air Z Sill Plate



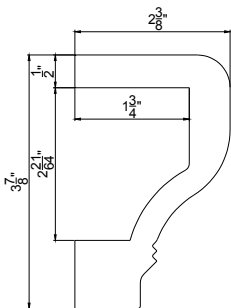
2" Deco Sill Plate



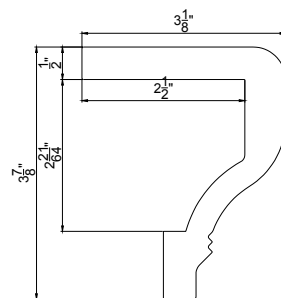
3" Crown Z Sill Plate



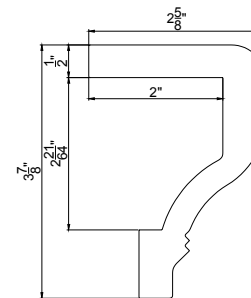
Curved Designer Sill Cap (L)



Curved Designer Sill Cap (Z)

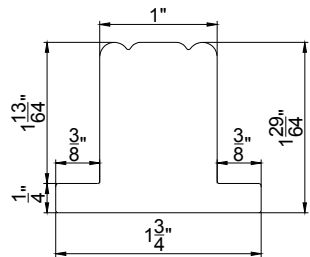


Curved Designer Sill Cap (D/HS)

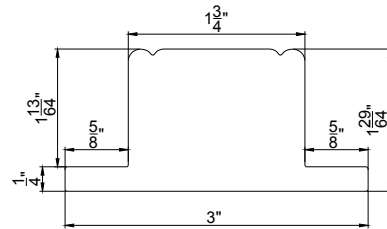


Framing Material

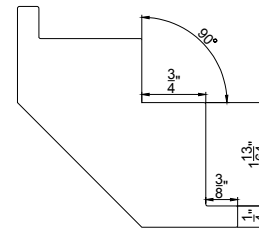
1" T Post w/ 1/4" Thick Light Block



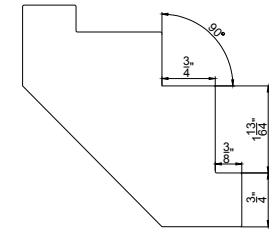
1 3/4" T Post w/ 1/4" Thick Light Block



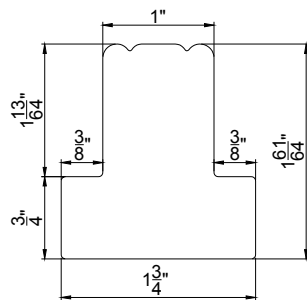
Corner Post w/ 1/4" Thick Light Block



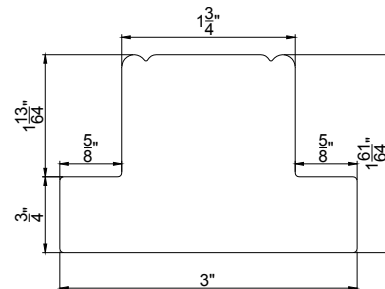
Corner Post w/ 3/4" Thick Light Block



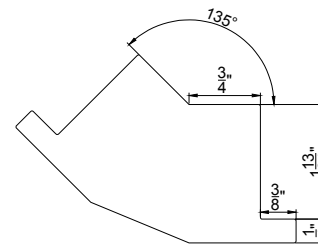
1" T Post w/ 3/4" Thick Light Block



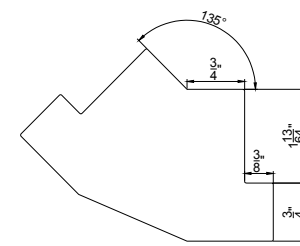
1 3/4" T Post w/ 3/4" Thick Light Block



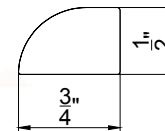
Bay Post w/ 1/4" Thick Light Block



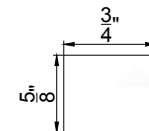
Bay Post w/ 3/4" Thick Light Block



Scribe Trim



Light Block



Also available

- ◇ Custom depth* up to 2" / width* up to 7 1/2" for T Post
- ◇ Custom angle bay post*
- ◇ Light block(s) comes with 2 sided or 3 sided frames, direct mount and hang strip IM

* Surcharge applies. Please see Options and Surcharge page for details