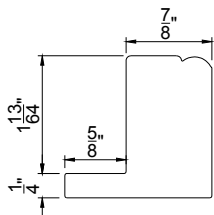
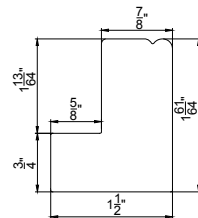


Framing Material

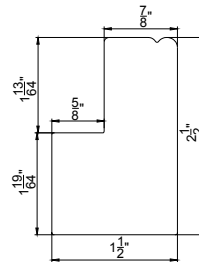
Beaded L Frame
w/ ¼" Thick Light Block



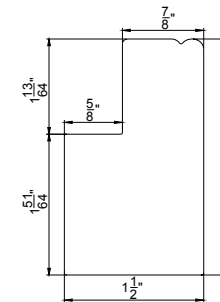
Beaded L Frame



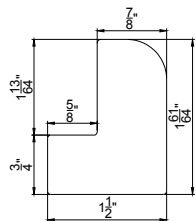
Beaded L Frame
w/ ½" Buildout*



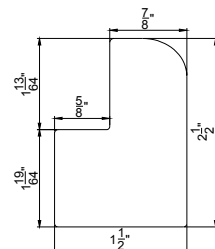
Beaded L Frame
w/ 1" Buildout*



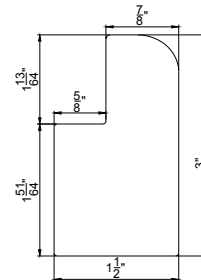
Bullnose L Frame



Bullnose L Frame
w/ ½" Buildout*



Bullnose L Frame
w/ 1" Buildout*



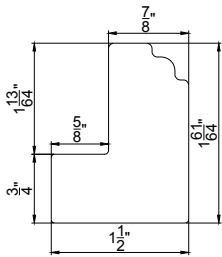
Also available

- ◇ Custom extension* up to 2" for L frames

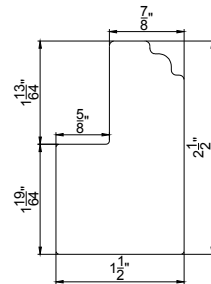
* Surcharge applies. Please see Options and Surcharge page

Framing Material

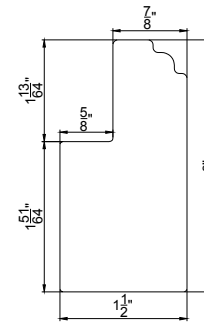
Colonial L Frame



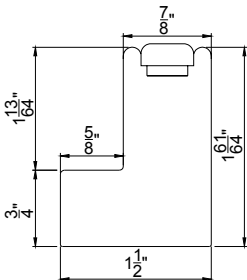
Colonial L Frame w/ 1/2" Buildout*



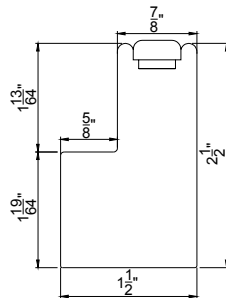
Colonial L Frame w/ 1" Buildout*



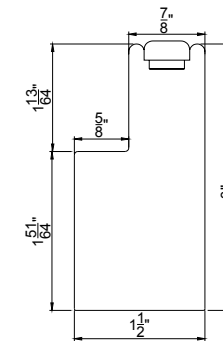
Vintage L Frame



Vintage L Frame w/ 1/2" Buildout*



Vintage L Frame w/ 1" Buildout*



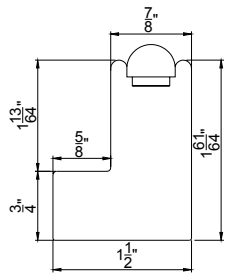
Also available

- ◇ Custom extension* up to 2" for L frames

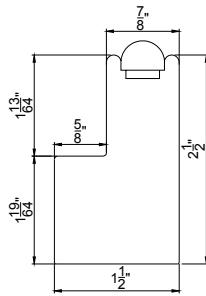
* Surcharge applies. Please see Options and Surcharge page

Framing Material

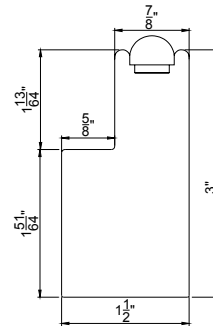
Rope L Frame*



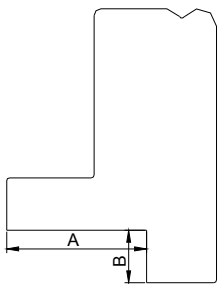
Rope L Frame w/ 1/2" Buildout*



Rope L Frame w/ 1" Buildout*

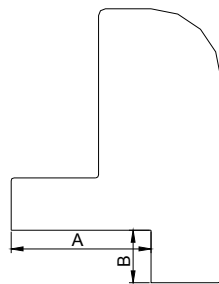


Notch Out Beaded L Frame (A) *



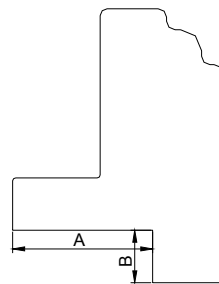
$A \leq 1"$
 $B \leq 3/8"$

Notch Out Bullnose L Frame (A) *



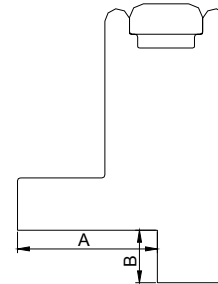
$A \leq 1"$
 $B \leq 3/8"$

Notch Out Colonial L Frame (A) *



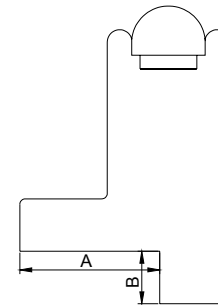
$A \leq 1"$
 $B \leq 3/8"$

Notch Out Vintage L Frame (A) *



$A \leq 1"$
 $B \leq 3/8"$

Notch Out Rope L Frame (A) *



$A \leq 1"$
 $B \leq 3/8"$

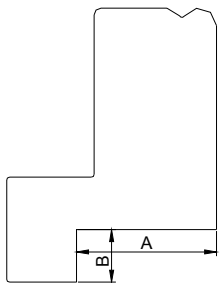
Also available

◇ Custom extension* up to 2" for L frames

* Surcharge applies. Please see Options and Surcharge page

Framing Material

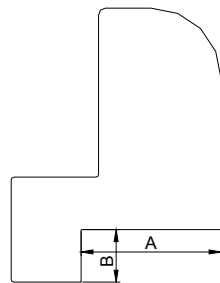
Notch Out
Beaded L Frame (B) ♦



$$A \leq 1''$$

$$B \leq \frac{3}{8}''$$

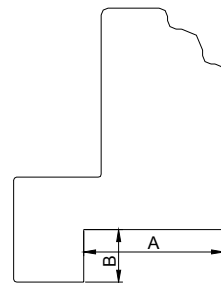
Notch Out
Bullnose L Frame (B) ♦



$$A \leq 1''$$

$$B \leq \frac{3}{8}''$$

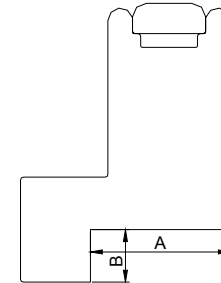
Notch Out
Colonial L Frame (B) ♦



$$A \leq 1''$$

$$B \leq \frac{3}{8}''$$

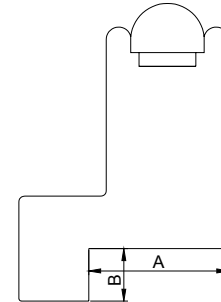
Notch Out
Vintage L Frame (B) ♦



$$A \leq 1''$$

$$B \leq \frac{3}{8}''$$

Notch Out
Rope L Frame (B) ♦



$$A \leq 1''$$

$$B \leq \frac{3}{8}''$$

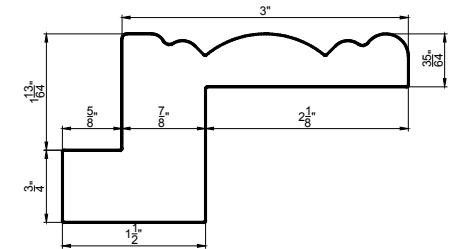
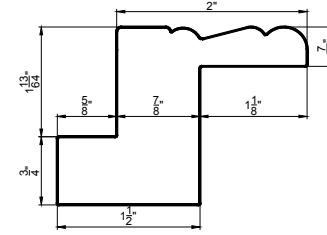
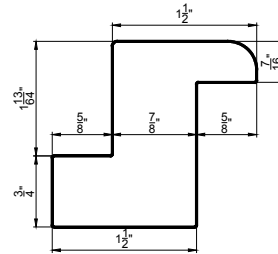
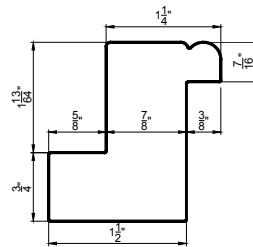
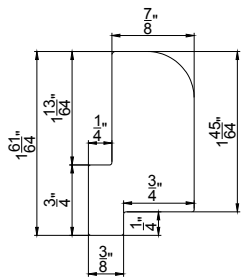
Bullnose Tilt Out Z Frame

1/4" Beaded Z Frame

1 1/2" Bullnose Z Frame

2" Bel Air Z Frame

3" Crown Z Frame



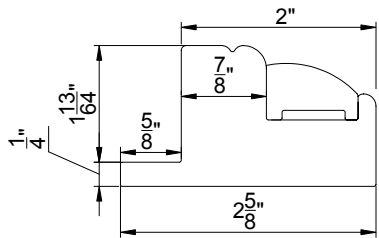
Also available

♦ Custom extension* up to 2" for L frames and up to 1" for Z frames (except for Tilt Out Z)

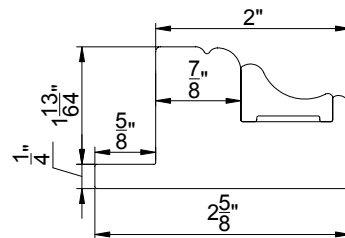
♦ Surcharge applies. Please see Options and Surcharge page

Framing Material

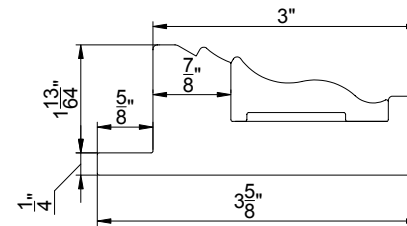
2" Camber Deco Frame



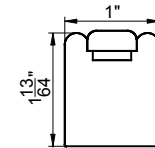
2" Classic Deco Frame



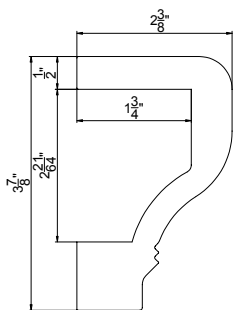
3" Ridge Deco Frame



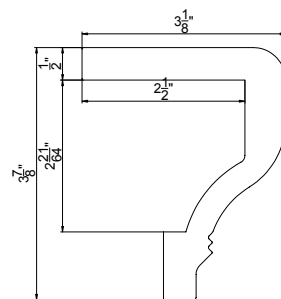
1" Vintage Hang Strip



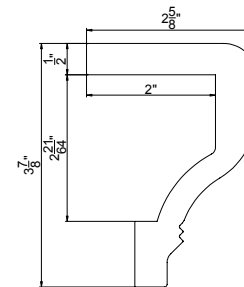
Curved Designer Sill Cap (L)



Curved Designer Sill Cap (Z)



Curved Designer Sill Cap (D/HS)



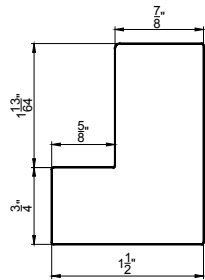
Also available

- ◇ 1/2", 1" and 1 1/2" standard extension[†] and custom extension[†] up to 2" for Deco frames
- ◇ Custom extension[†] up to 2" for Hang Strip (OM)

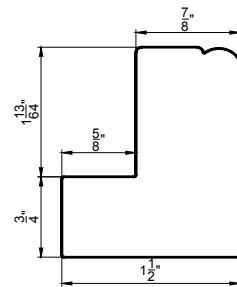
[†] Surcharge applies. Please see Options and Surcharge page

Framing Material

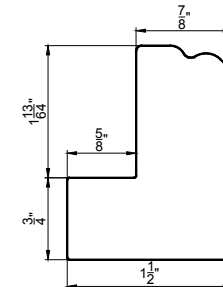
1¼" Beaded Z &
1½" Bullnose Z Sill Plate



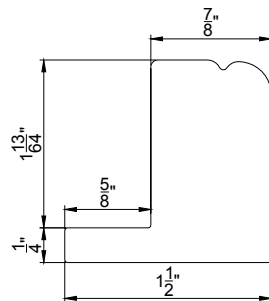
2" Bel Air Z Sill Plate



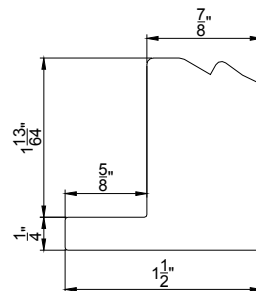
3" Crown Z Sill Plate



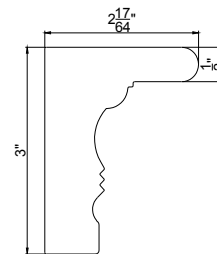
2" Deco Sill Plate



3" Ridge Deco Sill Plate

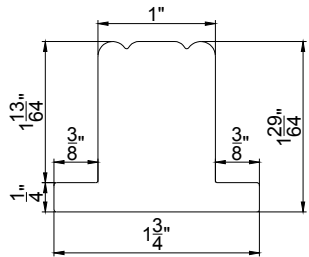


Deco Sill Frame

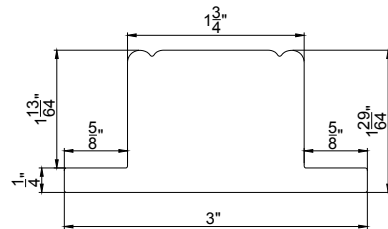


Framing Material

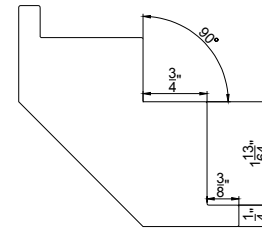
1" T Post w/ 1/4" Thick Light Block



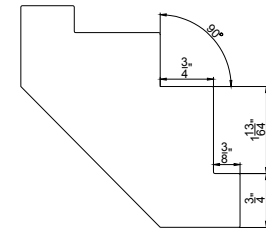
1 3/4" T Post w/ 1/4" Thick Light Block



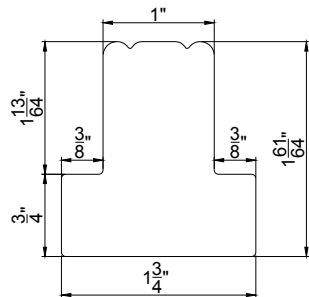
Corner Post w/ 1/4" Thick Light Block



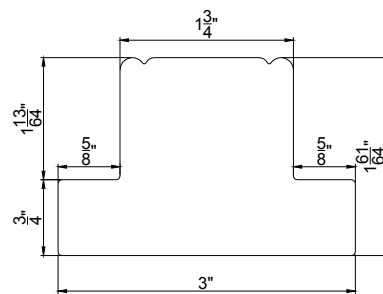
Corner Post w/ 3/4" Thick Light Block



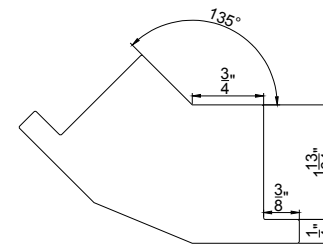
1" T Post w/ 3/4" Thick Light Block



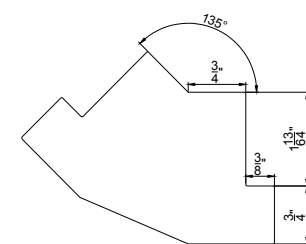
1 3/4" T Post w/ 3/4" Thick Light Block



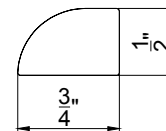
Bay Post w/ 1/4" Thick Light Block



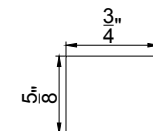
Bay Post w/ 3/4" Thick Light Block



Scribe Trim



Light Block



Also available

- ◇ Custom depth* up to 2" / width* up to 7 1/2" for T Post
- ◇ Custom angle bay post*
- ◇ Light block(s) comes with 2 sided or 3 sided frames, direct mount and hang strip IM

* Surcharge applies. Please see Options and Surcharge page for details